

Glass & Stainless Steel Cleaner

Health & Safety
Please refer to relevant SDS

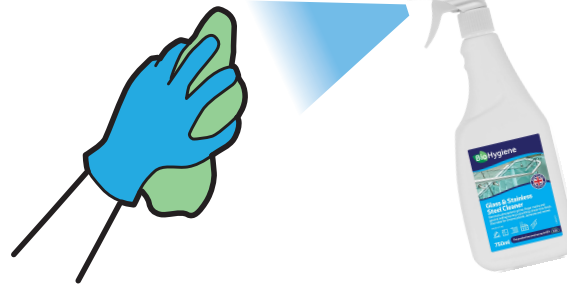


Don't forget
PPE

1

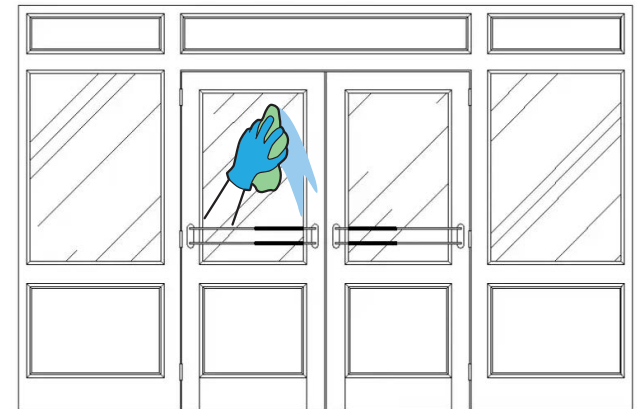


2



Spray onto a clean cloth or paper towel

2a



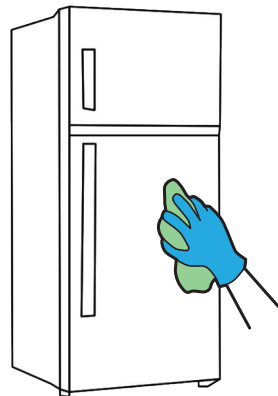
Apply to your glass or stainless steel surface. Clean smears and marks and then buff to a shine

3

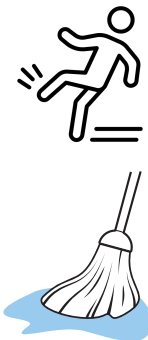
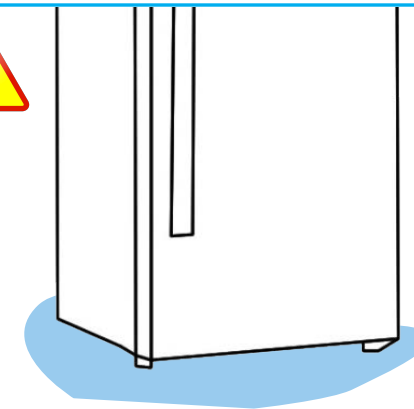


Spray sparingly directly onto your glass or stainless steel surface

3a



Use a dry cloth or paper towel to buff to a shine



If spraying directly onto a surface some product will go onto floor and create a slip hazard. Mop or wipe floor clean